






No.	Code	Description	Qty	Remarks
1	10001	Handle	1	
2	30121	Lock Pin	1	
3	10002	Washer for Handle	1	
4	30167	Bolt for Face Plate	6	
5	10006A	Face Plate with Label	1	Specify White/Black
6	20002A	O-ring for Rotor	2	
7	30120	Spring	1	
8	10003A	Washer for Spring	1	
9	20008	O-ring for Face Plate	1	
10	10008A	Rotor	1	
11	20004	Modo Gasket	1	
12	10009	Top Mount Valve Body	1	Specify White/Black
13	30002	Oil Pressure Gauge 0 - 50psi	1	
14	10004	Drain Plug	1	Specify White/Black
15	20015	O-ring for Drain plug & Pressure Gauge	2	
16	30162	Nut for Face Plate	6	
17	10013	Gasket for Diffuser	1	
18	10014	Diffuser	1	
19	20005	O-ring for Stand Tube	1	
20	10105 10106	Clamp Neck Set	1	Specify White/Black
21	20017	O-ring for Filter Neck	1	
22	30169	Bolt for Clamp Neck	2	
23	30161	Nut for Clamp Neck	2	
24	70282	1.5" Union Set Metric (White)	2	Components Option Available
	70283	1.5" Union Set Imperial (White)	2	
	70286	1.5" Union Set Metric (Black)	2	
	70287	1.5" Union Set Imperial (Black)	2	
	90511	1.5" Angle - Adjustable Union Set Metric (White) - NEW	2	
	90512	1.5" Angle - Adjustable Union Set Imperial (White) - NEW	2	
25		Drain Set with Inline Sight Glass	1	Specify White/Black

1.5" Union Set Components

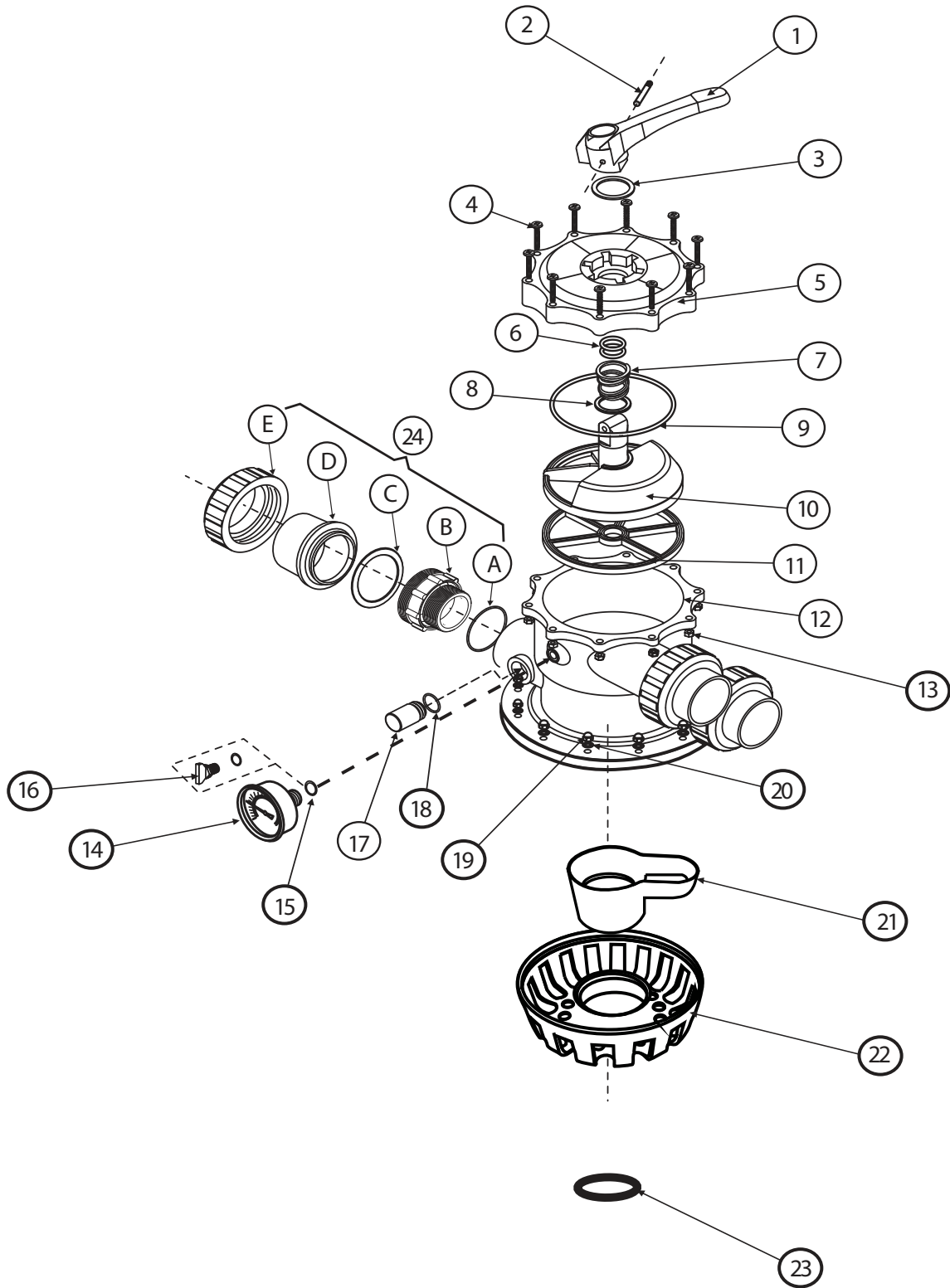
No.	Code	Standard Union Set (White)	Qty	Image
24-A	20006	Bulkhead O-ring	1	
24-B	10016	Bulkhead Fitting	1	
24-C	20007	Gasket	1	
24-D	10017	Union Adaptor - Metric	1	
	10018	Union Adaptor - Imperial	1	
24-E	10015	Nut	1	
		Standard Union Set (Black)		
24-A	20006	Bulkhead O-ring	1	
24-B	10019	Bulkhead Fitting	1	
24-C	20007	Gasket	1	
24-D	10027	Union Adaptor - Metric	1	
	10026	Union Adaptor - Imperial	1	
24-E	10025	Nut	1	
		Union Set (White) - New Angle Adjustable		
24-A	20006	Bulkhead O-ring	1	
24-B	20073	Bulkhead Fitting	1	
24-C	20007	Gasket	1	
24-D	20075	Union Adaptor - Metric	1	
	20076	Union Adaptor - Imperial	1	
24-E	20074	Nut	1	

1.5" Drain Set Components

		Drain Set (White)		
25-A	20006	O-ring for Sightglass & Bulkhead	2	
25-B	10016	Bulkhead Fitting	1	
25-C	20007	Gasket	1	
25-D	10022	Sightglass	1	
25-E	10015	Nut	1	
25-G	10021	Union Adapter Metric	1	
		Union Adapter Imperial	1	
		Drain Set (Black)		
25-A	20006	O-ring for Sightglass & Bulkhead	2	
25-B	10019	Bulkhead Fitting	1	
25-C	20007	Gasket	1	
25-D	10022	Sightglass	1	
25-E	10025	Nut	1	
25-G		Union Adapter Metric	1	
		Union Adapter Imperial	1	




Top Mount Multiport Valve 2.0"

V2.0



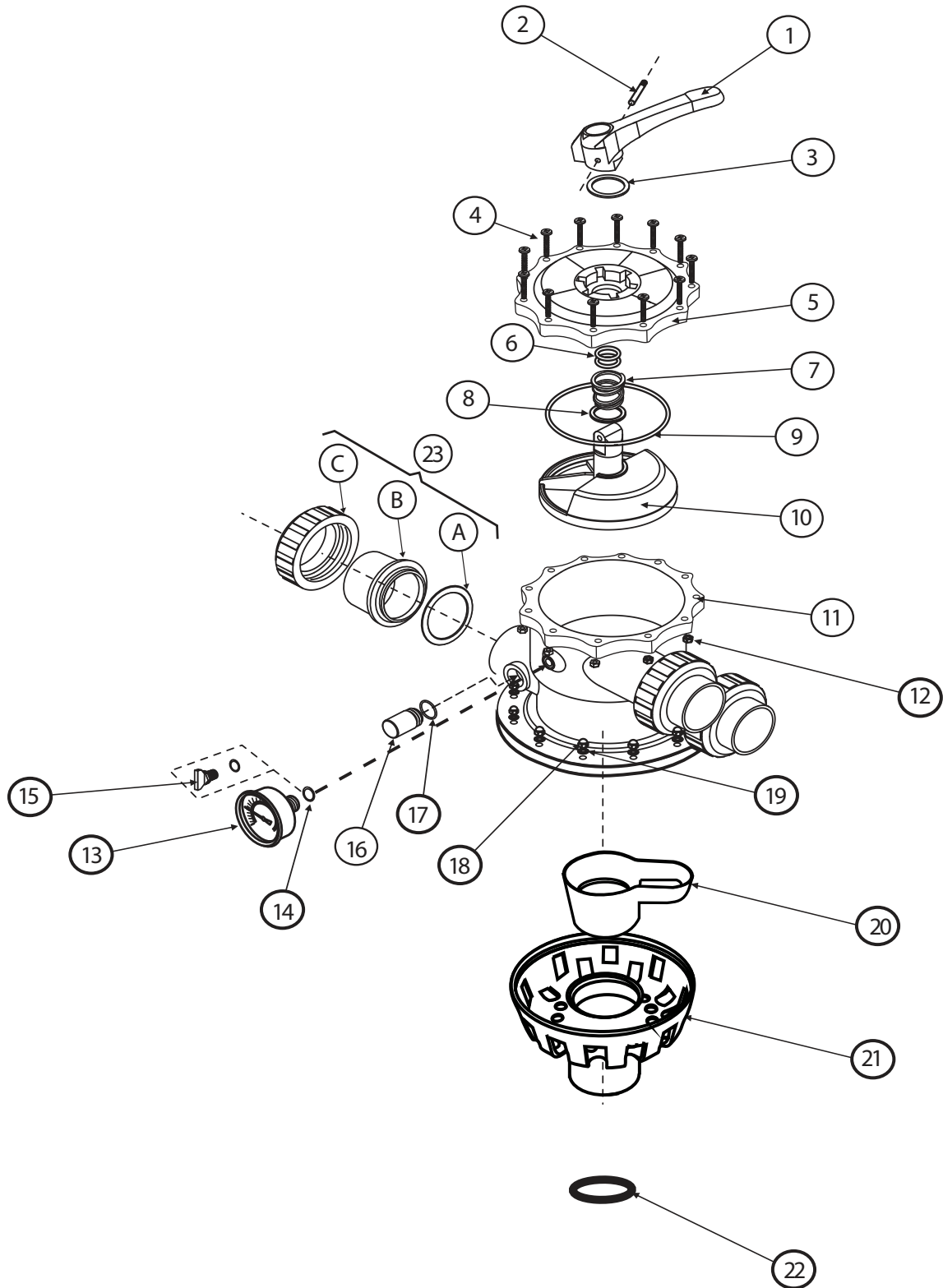
No.	Code	Description	Qty	Remarks
1	10001	Handle	1	
2	30121	Lock Pin	1	
3	10002	Washer for Handle	1	
4	30167	Bolt for Face Plate	10	
5	10033A	Face Plate with Label	1	Specify White/Black
6	20002A	O-ring for Rotor	2	
7	30120	Spring	1	
8	10003A	Washer for Spring	1	
9	20008	O-ring for Face Plate	1	
10	10229A	Rotor	1	
11	20009	Mode Gasket	1	
12	10034	Top Mount Valve Body	1	Specify White/Black
13	30162	Nut for Face Plate	6	
14	30002	Oil Pressure Gauge 0 - 50psi	1	
15	20015	O-ring for Drain plug & Pressure Gauge	2	
16	10004	Drain Plug	1	Specify White/Black
17	10041	Sightglass	1	
18	20010	O-ring for Sightglass	1	
19	30170	Cap Nut	12	
20	30172	Washer for Cap Nut	12	
21	10039	Gasket for Diffuser	1	
22	10038	Diffuser	1	
23	20011	O-ring for Stand Tube	1	
24	70284	2.0" Union Set Metric (White)	3	Components Option Available
	70285	2.0" Union Set Imperial (White)	3	
	70288	2.0" Union Set Metric (Black)	3	
	70289	2.0" Union Set Imperial (Black)	3	
	90515	2.0" Angle Adjustable Union Set Metric (White) - NEW	3	
	90516	2.0" Angle Adjustable Union Set Imperial (White) - NEW	3	

2.0" Union Set Components

No.	Code	Standard Union Set (White)	Qty	Image
24-A	20012	Bulkhead O-ring	1	
24-B	10045	Bulkhead Fitting	1	
24-C	20013	Gasket	1	
24-D	10043	Union Adaptor - Metric	1	
	10044	Union Adaptor - Imperial	1	
24-E	10042	Nut	1	
		Standard Union Set (Black)		
24-A	20012	Bulkhead O-ring	1	
24-B	10046	Bulkhead Fitting		
24-C	20013	Gasket	1	
24-D	10049	Union Adaptor - Metric	1	
	10050	Union Adaptor - Imperial	1	
24-E	10047	Nut	1	
		Union Set (White) - New Angle Adjustable		
24-A	20012	Bulkhead O-ring	1	
24-B	20077	Bulkhead Fitting	1	
24-C	20013	Gasket	1	
24-D	20079	Union Adaptor - Metric	1	
	20080	Union Adaptor - Imperial	1	
24-E	20078	Nut		



Top Mount Multiport Valve 2.5"

V2.5



No.	Code	Description	Qty	Remarks
1		Handle	1	
2		Lock Pin	1	
3		Washer for Handle	1	
4		Bolt for Face Plate	12	
5		Face Plate with Label	1	Specify White/Black
6		O-ring for Rotor	2	
7		Spring	1	
8		Washer for Spring	1	
9		O-ring for Face Plate	1	
10		Rotor	1	
11		Top Mount Valve Body	1	Specify White/Black
12		Nut for Face Plate	12	
13		Oil Pressure Gauge 0 - 50psi	1	
14		O-ring for Drain plug & Pressure Gauge	2	
15		Drain Plug	1	Specify White/Black
16		Sightglass	1	
17		O-ring for Sightglass	1	
18		Cap Nut	8	
19		Washer for Cap Nut	8	
20		Gasket for Diffuser	1	
21		Diffuser	1	
22		O-ring for Stand Tube	1	
23		2.5" Union Set Metric (White)	3	Components Option Available
		2.5" Union Set Imperial (White)	3	
		2.5" Union Set Metric (Black)	3	
		2.5" Union Set Imperial (Black)	3	

2.5" Union Set Components

Index	Code	Standard Union Set (White)	Qty	Image
23-A		Gasket	1	
23-B		Union Adaptor - Metric	1	
		Union Adaptor - Imperial	1	
23-C		Nut	1	
Standard Union Set (Black)				
23-A		Gasket	1	
23-B		Union Adaptor - Metric	1	
		Union Adaptor - Imperial	1	
23-C		Nut	1	